

powered by



Digging Deeper into Your Data.

Fully GIS integrated and easy to use.

System requirements:

- › Windows® XP SP 2, Vista
- › ESRI ArcGIS with last Service Pack
- › ESRI® Spatial Analyst
- › ESRI.Net-Support

advangeo® is Winner of the GDI Sachsen e.V. GIS-Award 2009.

Supported by BMWi (German Federal Ministry of Economics and Technology)

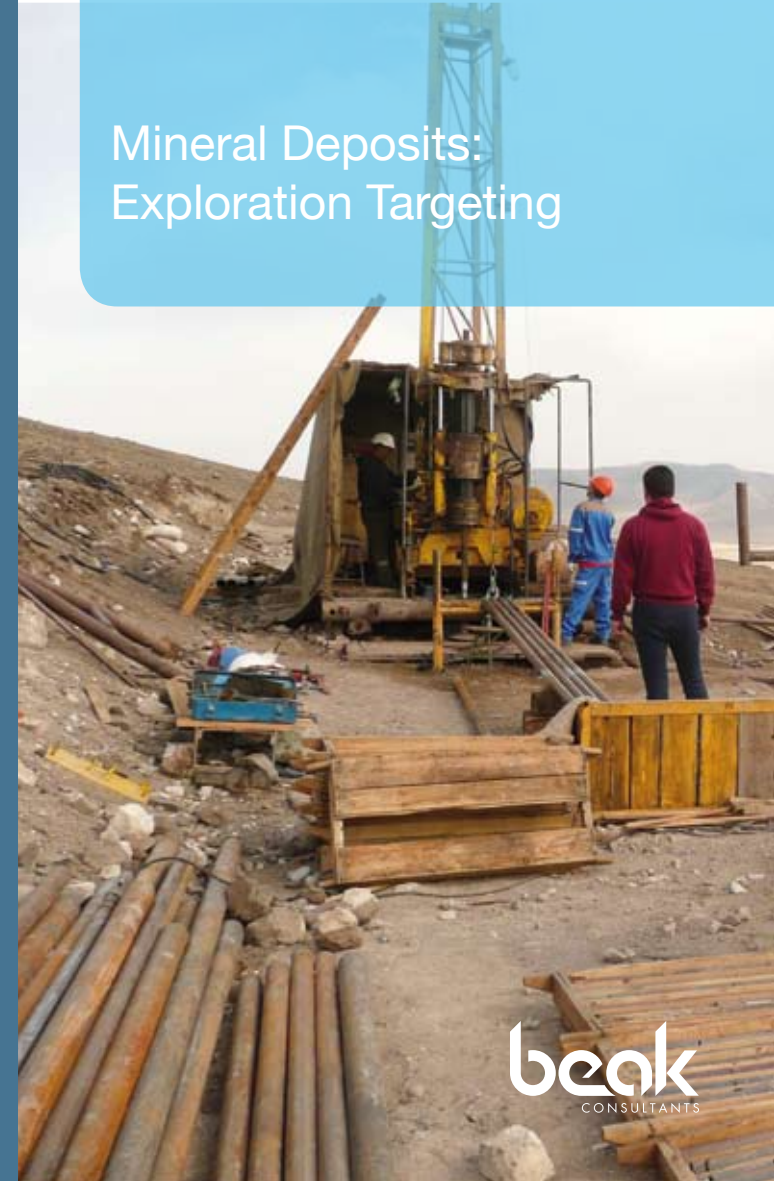
advangeo®

Contact us:

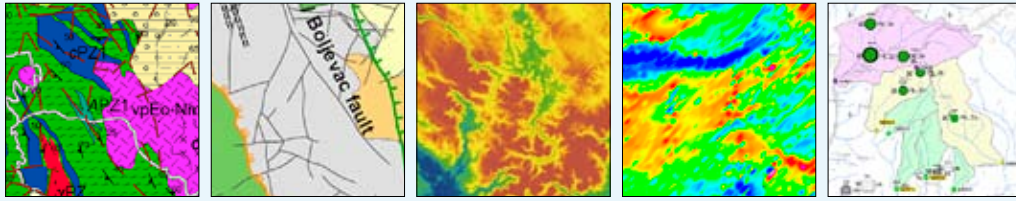
Beak Consultants GmbH
Am St. Niclas Schacht 13
D-09599 Freiberg / Germany
Tel. +49 (0)3731 78 13 50
Fax +49 (0)3731 78 13 52
info@advangeo.com
www.advangeo.com

© 2009
advangeo® is a registered trademark
of Beak Consultants GmbH, Germany.

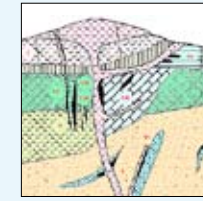
Mineral Deposits: Exploration Targeting



1 Source Data



Geological Data, Geochemical Data, Tectonic Data, Mineral Deposit Data, Airborne Geophysics



Ore Controlling Factors

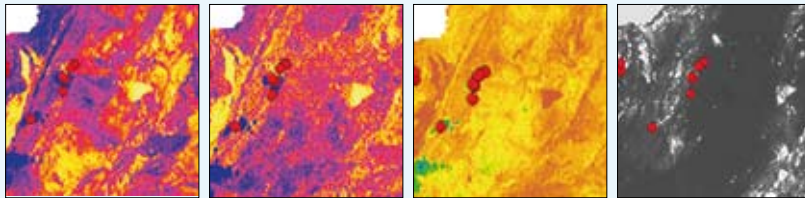
Available Datasets

&

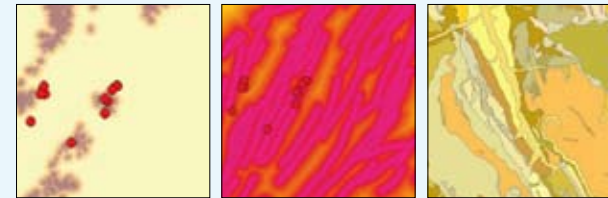
Knowledge of Controlling Parameters



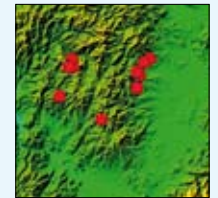
2 Model Input Data



Airborne Geophysics:
Electromagnetics, Magnetics, Radiometry

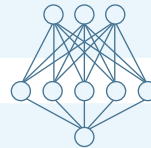


Geology:
Volcanics, Faults, Stratigraphy



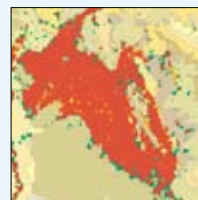
Training Pattern:
Known Deposits

Controlling Parameters



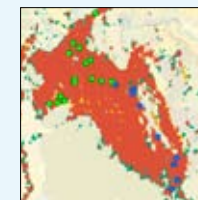
3 Network Training

Analysing the Footprints of the Deposits



Model Output

4 Validation



Verifying the Model Output
with Known Deposit Locations

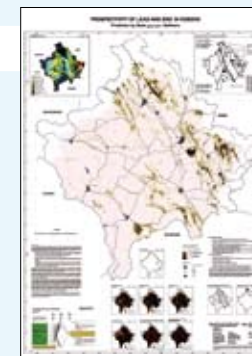


5 Model Application

Creation of
Probability Maps



6 Presentation



Compilation of
Presentation Maps

