

powered by



## Digging Deeper into Your Data.

Fully GIS integrated and easy to use.

### System requirements:

- › Windows® XP SP 2, Vista
- › ESRI ArcGIS with last Service Pack
- › ESRI® Spatial Analyst
- › ESRI.Net-Support

advangeo® is Winner of the GDI Sachsen e.V. GIS-Award 2009.

Supported by BMWi (German Federal Ministry of Economics and Technology)

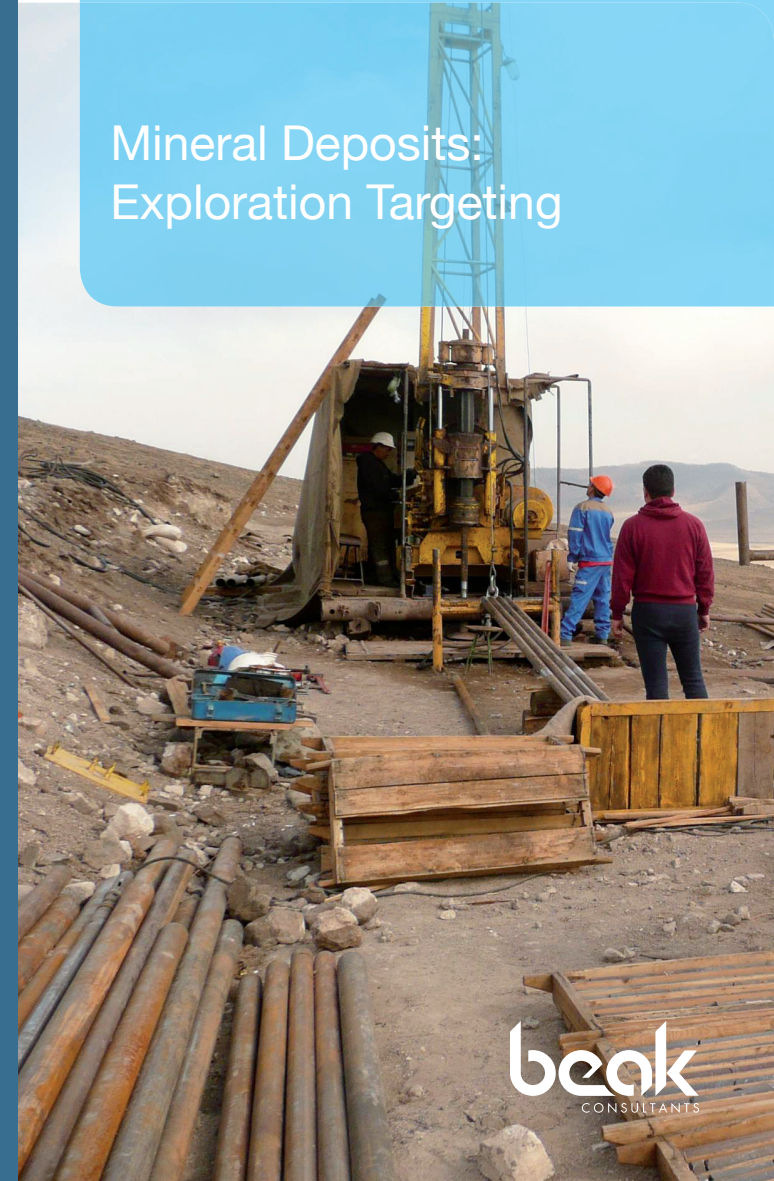
# advangeo®

Contact us:

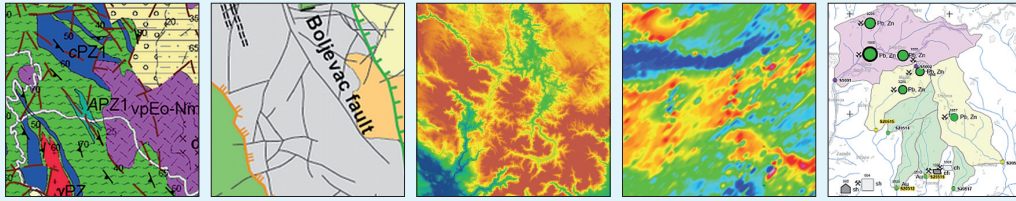
**Beak Consultants GmbH**  
Am St. Niclas Schacht 13  
D-09599 Freiberg / Germany  
Tel. +49 (0)3731 78 13 50  
Fax +49 (0)3731 78 13 52  
info@advangeo.com  
www.advangeo.com

© 2009  
advangeo® is a registered trademark  
of Beak Consultants GmbH, Germany.

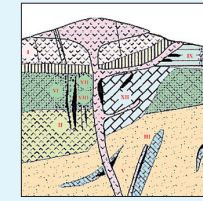
## Mineral Deposits: Exploration Targeting



# 1 Source Data



Geological Data, Geochemical Data, Tectonic Data, Mineral Deposit Data, Airborne Geophysics



Ore Controlling Factors

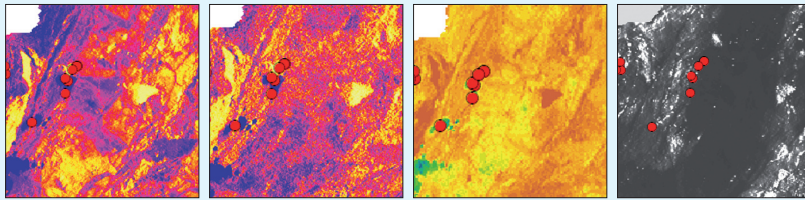
Available Datasets

&

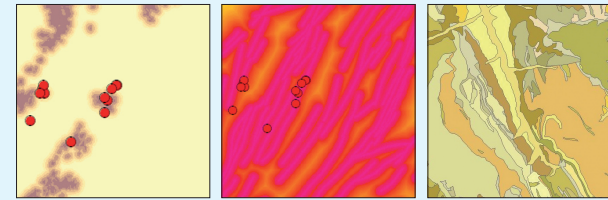
Knowledge of Controlling Parameters



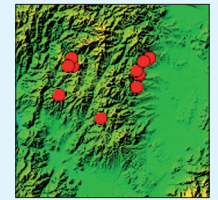
# 2 Model Input Data



Airborne Geophysics:  
Electromagnetics, Magnetics, Radiometry

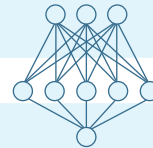


Geology:  
Volcanics, Faults, Stratigraphy



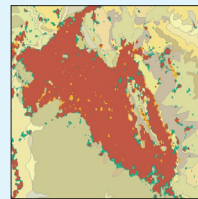
Training Pattern:  
Known Deposits

Controlling Parameters



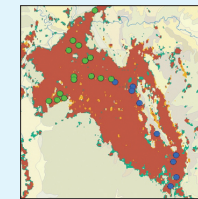
# 3 Network Training

Analysing the Footprints of the Deposits



Model Output

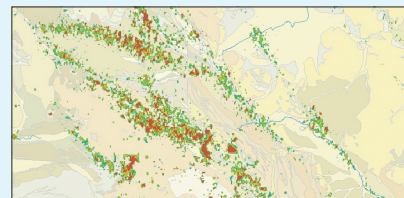
# 4 Validation



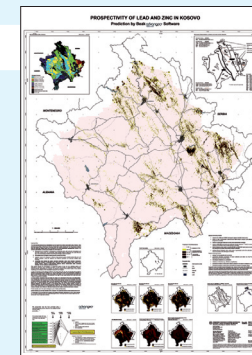
Verifying the Model Output  
with Known Deposit Locations

# 5 Model Application

Creation of  
Probability Maps



# 6 Presentation



Compilation of  
Presentation Maps