

powered by



advangeo®

Digging Deeper into Your Data

Fully GIS integrated and easy to use prediction mapping software using artificial intelligence technologies

System requirements:

- > Windows® 7 / 10
- > Esri ArcGIS 10.2 / 10.5 with latest service pack installed
- > Spatial Analyst extension for Esri ArcGIS 10.2 / 10.5

advangeo® is Winner of the GDI Sachsen e.V. GIS-Award 2009.

Supported by BMWi (German Federal Ministry of Economics and Technology)

Contact us:

Beak Consultants GmbH
Am St. Niclas Schacht 13
D-09599 Freiberg / Germany
Tel. +49 (0)3731 78 13 50
Fax +49 (0)3731 78 13 52
info@advangeo.com
www.advangeo.com

© 2018

advangeo® is a registered trademark of Beak Consultants GmbH, Germany.

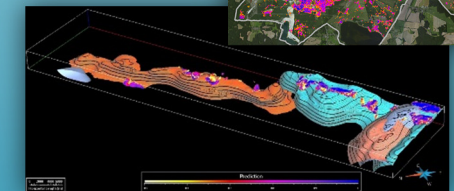
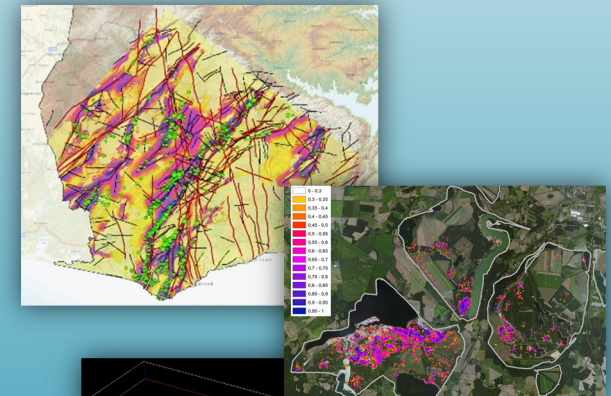
Training Course

Exploration Targeting and Geo-hazard Mapping with Artificial Intelligence (AI)

16 – 20 September 2019

Beak Consultants GmbH
Freiberg, Germany

Invitation



advangeo® Prediction Software: Geospatial Prediction Using Artificial Intelligence and GIS

General Information:

> **Date**
16th – 20th September 2019



> **Location / Venue**
Beak Consultants GmbH
Am St. Niclas Schacht 13
09599 Freiberg / Germany



> **Where to find us:**



Software:

- > **advangeo® Prediction Software** will be provided and used during the training course.
- > In case of purchase of the software, the training course fee will be deducted as discount from the software costs.

Preliminary Schedule:

- > **Monday, 16th September 2019:**
 - Introduction
 - Machine learning techniques
 - Theoretical background of predictive mapping with artificial neural networks (ANN)
 - Usage and functionalities of advangeo® Prediction Software
- > **Tuesday, 17th September 2019:**
 - Case studies for exploration targeting
 - Gold deposits in Ghana
 - Tin and tungsten in Erzgebirge / Germany
 - Manganese nodules in Pacific Ocean
 - Tutorial for mineral predictive mapping with ANN:
 - Creation of a project and problem definition,
 - Import of base data into the project,
 - Processing of source data,
- > **Wednesday, 18th September 2019:**
 - Tutorial for mineral predictive mapping with ANN:
 - Creation of model input data,
 - Setting up of model scenarios,
 - Training of artificial neural network,
 - Application of artificial neural network
 - Excursus:
 - Application of self-organizing maps for prediction of mineral potential
 - Mineral predictive mapping in 3D
- > **Thursday, 19th September 2019:**
 - Case studies for geo-hazard mapping:
 - Soil liquefaction lignite tailings Lusatia / Germany
 - Slope instabilities Windhoek / Namibia
 - Landslides railway and highway network Germany
 - Tutorial for geo-hazard mapping with fuzzy logic and ANN
 - Excursus:
 - Application of random forest for prediction of soil erosion
- > **Friday, 20th September 2019:**
 - Study tour:
 - Freiberg: Visit to Terra Mineralia minerals exhibition and city tour,
 - Dresden: Possibility to visit selected exhibition and city tour.

Registration:

By fax

> +49-3731-781352

By e-mail:

> postmaster@beak.de

Contact:

> Andreas Knobloch
Beak Consultants GmbH
andreas.knobloch@beak.de

Registration form:

Herewith, I am registering for the advangeo® Prediction Software training course from 16th to 20th September 2019 in Freiberg / Germany.

- > **Name:**
- > **Surname:**
- > **Institution:**
- > **Address:**
- > **City, ZIP-Code:**
- > **Country:**
- > **Phone:**
- > **E-Mail:**

Date:

Signature:

Registration fee:

- > **Training Course:** 1000 €
- > **Accommodation:** We would be happy to assist you to find and book hotel in Freiberg. Please contact us for further information about available accommodation options. Room rates are not included in the training course fee.

Registration deadline:

- > **31st May 2019**
- > **Course is limited to 10 participants**

Course materials:

- > Printed handouts are included in the training course fee.
- > Computer for training will be provided.
- > Participants can bring their own data for testing.